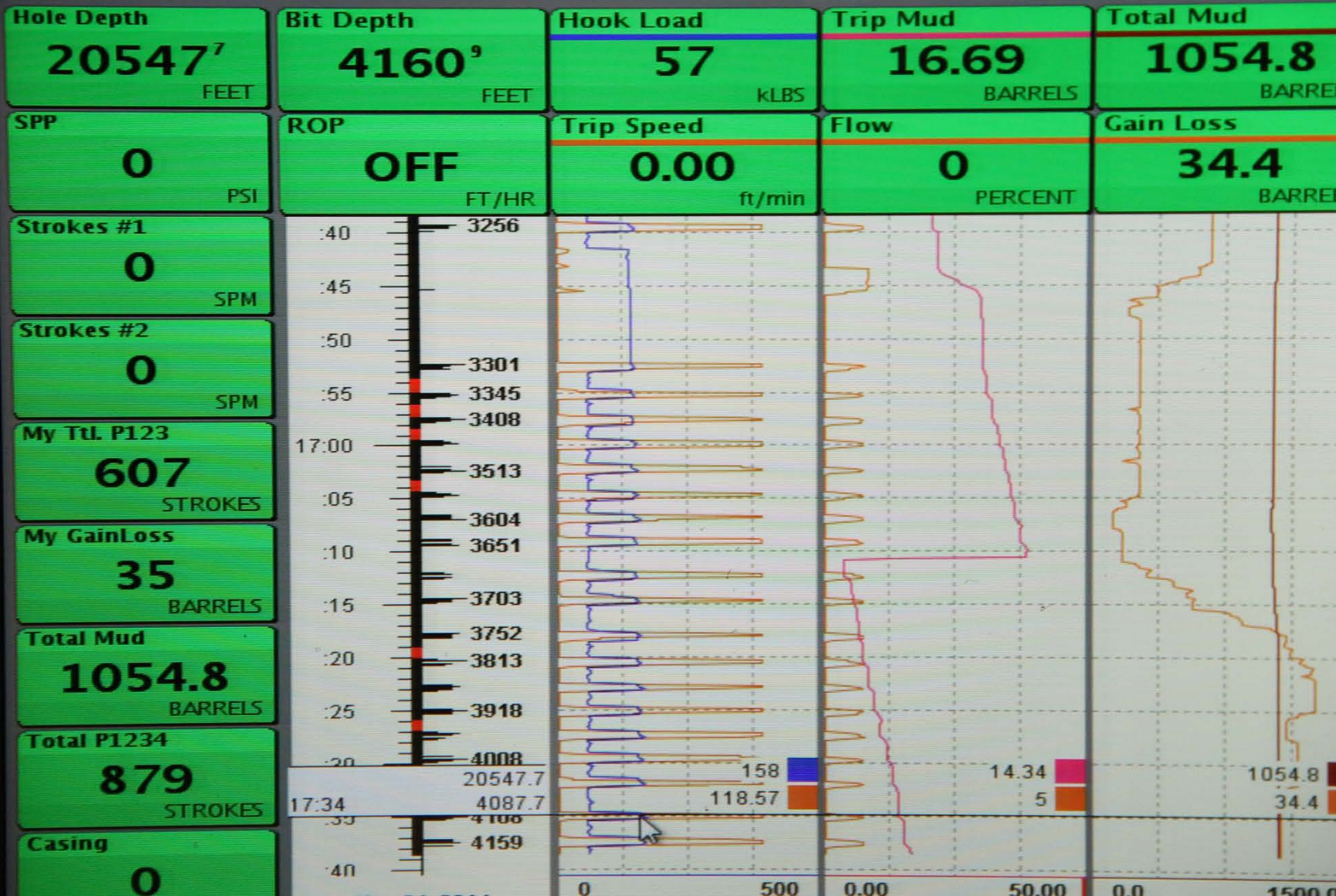




OPERATOR WKSTN

LEWIS 7-18H-1 TRINIDAD 124

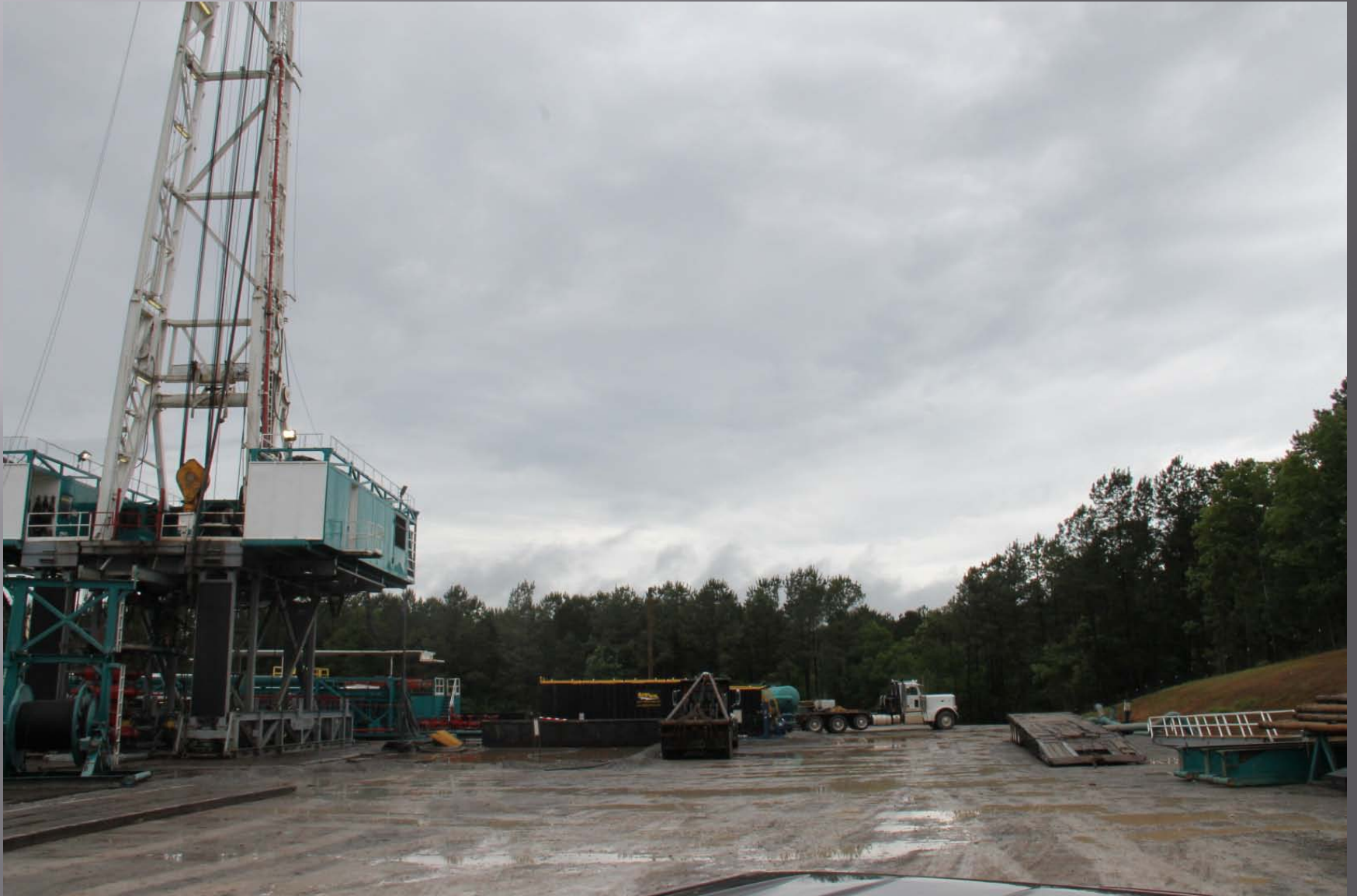








Trinidad 124 “Coming Down”











Frac'ing Commences















Plug Drill Out “Underway”







“Flow Back”













encana

ENCANA OIL & GAS (USA) INC.

EMERGENCY PH: (866) 244-0062

LEWIS 7-18H-1

SEC.7. T1N-R4E

API # 23-005-208011000

LATITUDE: N 31.0688

LONGITUDE: W -90.843872

AMITE COUNTY, MS



“And it Begins, Again”

Goodrich

T Lewis 7-38H #1

